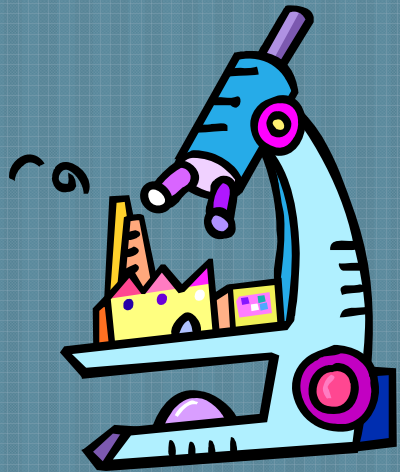


Short-term solutions

Conduct an Energy Audit - Home and Office



- 1) **Build a strategy** that will help make your home or office operate more efficiently without sacrificing occupational comfort
- 2) **Establish energy usage baseline** and then **closely monitor** your usage once you have implemented your strategy
 - Lighting (indoor and outdoor)
 - Lighting control
 - Chillers
 - Ventilation systems
 - Air conditioning systems
 - Office equipment and Appliances
 - Domestic hot water
 - Building insulation
 - Infiltration (air leakage into buildings)

Short-term solutions

Replace regular light bulbs with CFLs or LEDs



- Use CFLs: save energy & save money
- Optimize CFLs in areas where the light is used for long periods of time
- Wider range of CFLs are now available
- As demand grows the unit cost of CFLs will drop
- For commercial properties, light-emitting diode (LED) lights use even less energy than a CFL and last even longer
- LED lights cost more but are more environmentally friendly than CFLs
- LED are excellent Christmas lights

Short-term solutions

Energy Efficient Appliances and Office Equipment



Based on standard U.S. Government tests

ENERGYGUIDE

Clothes Washer
Capacity: Standard

Model(s) Maytag
MLE2000A

Compare the Energy Use of this Clothes Washer
with Others Before You Buy.

This Model Uses 314 kWh/year	ENERGY STAR A symbol of energy efficiency
Energy use (kWh/year) range of all similar models	
Uses Least Energy 177	Uses Most Energy 1298

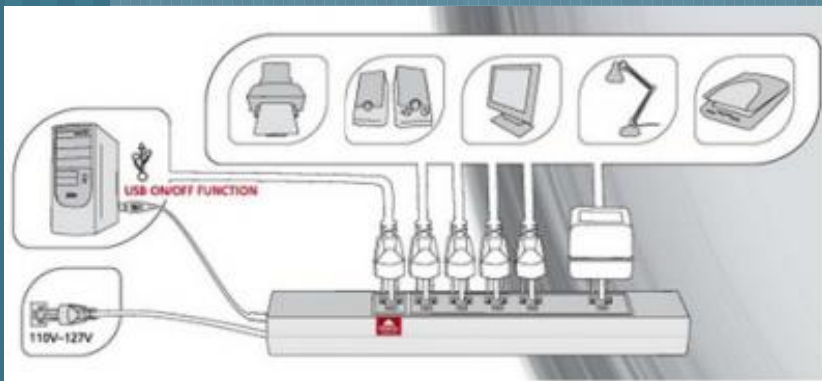
kWh/year (kilowatt-hours per year) is a measure of energy (electricity) use. Your utility company uses it to compute your bill. Only standard size clothes washers are used in this scale.

Clothes washers using more energy cost more to operate.
This model's estimated yearly operating cost is:

\$25	\$11
When used with an electric water heater	When used with a natural gas water heater

Based on eight loads of clothes a week and a 2000 U.S. Government national average cost of 9.22¢ per kWh for electricity and 60.5¢ per therm for natural gas. Your actual operating cost will vary depending on your local utility rates and your use of the product.

Important: Be sure to follow the energy performance label on this product's Energy Guide. For more information, visit www.energystar.gov.



- Only accept Energy Star or equivalent rated appliance and office equipment
- Purchasing decision should be based on price and projected energy savings
- According WSJ, a 42-inch plasma set can consume more electricity than a full-size refrigerator -- even when that TV is used only a few hours a day
- 15% of the electricity used in UK offices is attributed to office equipment
- An intelligent powerbar has a USB port that plugs into your computer. When your computer turns off, so does the rest of the powerbar and all the other devices get their power cut.

Short-Term Solutions

Use of light timers and sensors



- **Sensors** reduce unnecessary lighting and saves money
- **Timers** provides additional security for the home and help to ensure lights are turned off
- Provides **dual control management of air conditioning and lighting** in large homes and commercial spaces



Short-Term Solutions

Monitor Air Conditioning



- Adjusting your thermostat down **10 to 15 degrees could save**, over 8 hr period, 10% on your energy bill
- When setting your **thermostat in the summer** make it as **high as you can tolerate** - find the least difference between the indoor and outdoor temperatures - this will lower your overall cooling bill
- **When turning your air conditioner on**, don't set your thermostat at a colder setting than normal – this will not cool your home any faster and could result in excessive cooling and, therefore, unnecessary expense

Short-Term Solutions

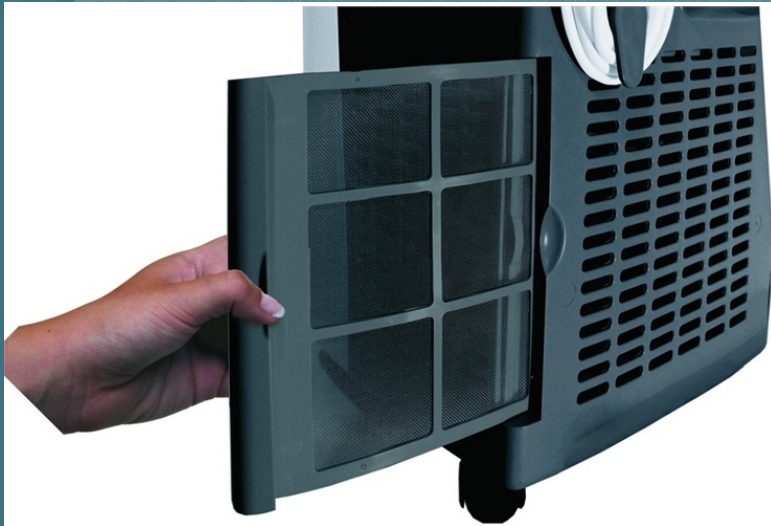
Monitor Air Conditioning



- When humidity is high, set the fan speed on low for more comfort. The low speed on humid days will make for a more comfortable home **by removing more moisture from the air**
- Install the unit in a shaded spot on the home's north or east side because **direct sunshine** on the unit's outdoor heat exchanger **decreases efficiency**
- Plant **trees and shrubs** to shade air-conditioning units but **do not block the air flow**.
- A unit operating in the shade uses as much as 10% less electricity than the same one operating in the sun.

Short-Term Solutions

Monitor Air Conditioning



- Check your unit's air filter once a month and clean or replace filters as necessary
- Keeping the filter clean can lower your air conditioner's energy consumption by 5% to 15%
- Clogged drain channels prevent a unit from reducing humidity, and excess moisture can lead to household damage and health issues
- Holes in the seal between the air conditioner and the window frame allow cool air to escape from your home



Short-Term Solutions

Using Ceiling Fans



- Use ceiling fans for cooling down the house in mild summer days - help to reduce energy cost by 60%
- For window air conditioners, consider using an interior fan to spread the cooled air more effectively through your home without greatly increasing electricity use

